



Cornerstones, 2 Stonewood Court, Sandygate, Sheffield, S10 5SR

Saxton Mee

Cornerstones, 2 Stonewood

Sandygate

Offers Around

£525,000

Occupying an enviable corner plot and situated in the sought after residential area of Sandygate is this three bedroom, detached bungalow with study a double detached garage and fully enclosed courtyard garden to the rear.

The accommodation briefly comprises: Entrance hallway with W.C/cloakroom and fitted storage cupboards. Large family lounge with feature fireplace and surround, floor to ceiling windows allow plenty of natural light. Off the lounge is a useful study/occasional fourth bedroom. A delightful breakfasting kitchen with a range of wall, drawer and base units. Integrated oven, hob, fridge/freezer and dishwasher with breakfast bar seating area. Rear sun lounge/porch. Three good sized bedrooms, the master having fitted wardrobes and dressing table. Bedroom three is currently used as a laundry room with fitted units housing the washing machine and tumble dryer. Modern bathroom with bath and shower over, wash hand basin and W.C with tiling to the floor and walls. Loft space ideal for storage.

Externally, the property occupies a delightful plot with lawn to the front and double driveway with detached garage having power, light and electric door. To the rear is a low maintenance courtyard garden with Indian stone paving and an array of established plants.

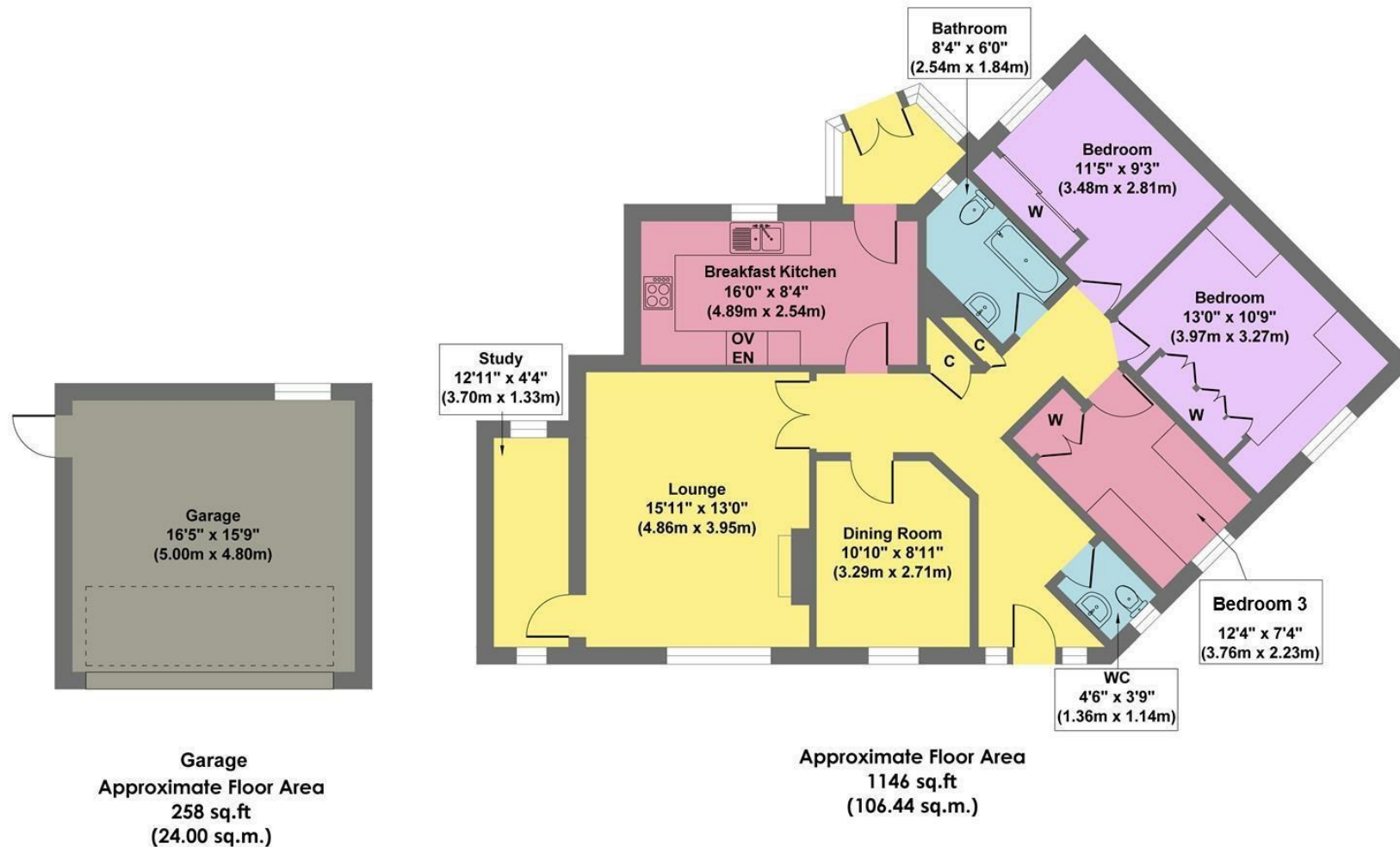
NB: Photos are from a previous sale.



- Detached Bungalow With Well Presented Accommodation
- Large Corner Plot With Private Gardens
- Detached Double Garage
- Large Family Lounge
- Three Bedrooms And Separate Study
- Sought After Location With Excellent Transport Links
- Lawned Garden And Courtyard
- Leasehold 200 Years From 25 March 1971 With Annual Ground Rent Of £75.00
- EPC Rating D/Council Tax Band E
- Viewings Via Banner Cross Office



Cornerstones



Approx. Gross Internal Floor Area 1404 sq.ft / 130.44 sq.m

Illustration for identification puposes only ,measurements are approximate, not to scale

While we endeavour to make our sales particulars fair, accurate and reliable, they are only a general guide to the property and, accordingly, if there is any point, which is of particular importance to you, please contact the relevant office. The Agents have not tested any apparatus, equipment, fittings or services and so cannot verify they are in working order. The buyer is advised to obtain verification. Please note all the measurement details are approximate and should not be relied upon as exact. All plans, floor plans and maps are for guidance purposes only and are not to scale. Under no circumstances should they be relied upon as exact or for use in planning carpets and other such fixtures, fittings or furnishings. YOUR HOME IS AT RISK IF YOU DO NOT KEEP UP REPAYMENTS ON A MORTGAGE OR OTHER LOAN SECURED ON IT. 'A Life Assurance policy may be requested.' 'Written Quotations of credit terms available on request.'

Banner Cross
T: 0114 268 3241
E: bannercross@saxtonmee.co.uk
www.saxtonmee.co.uk

Hathersage
T: 01433 650009
E: hathersage@saxtonmee.co.uk

Bakewell
T: 01629 815307
E: bakewell@saxtonmee.co.uk

Matlock
T: 01629 828250
E: matlock@saxtonmee.co.uk

Saxton Mee